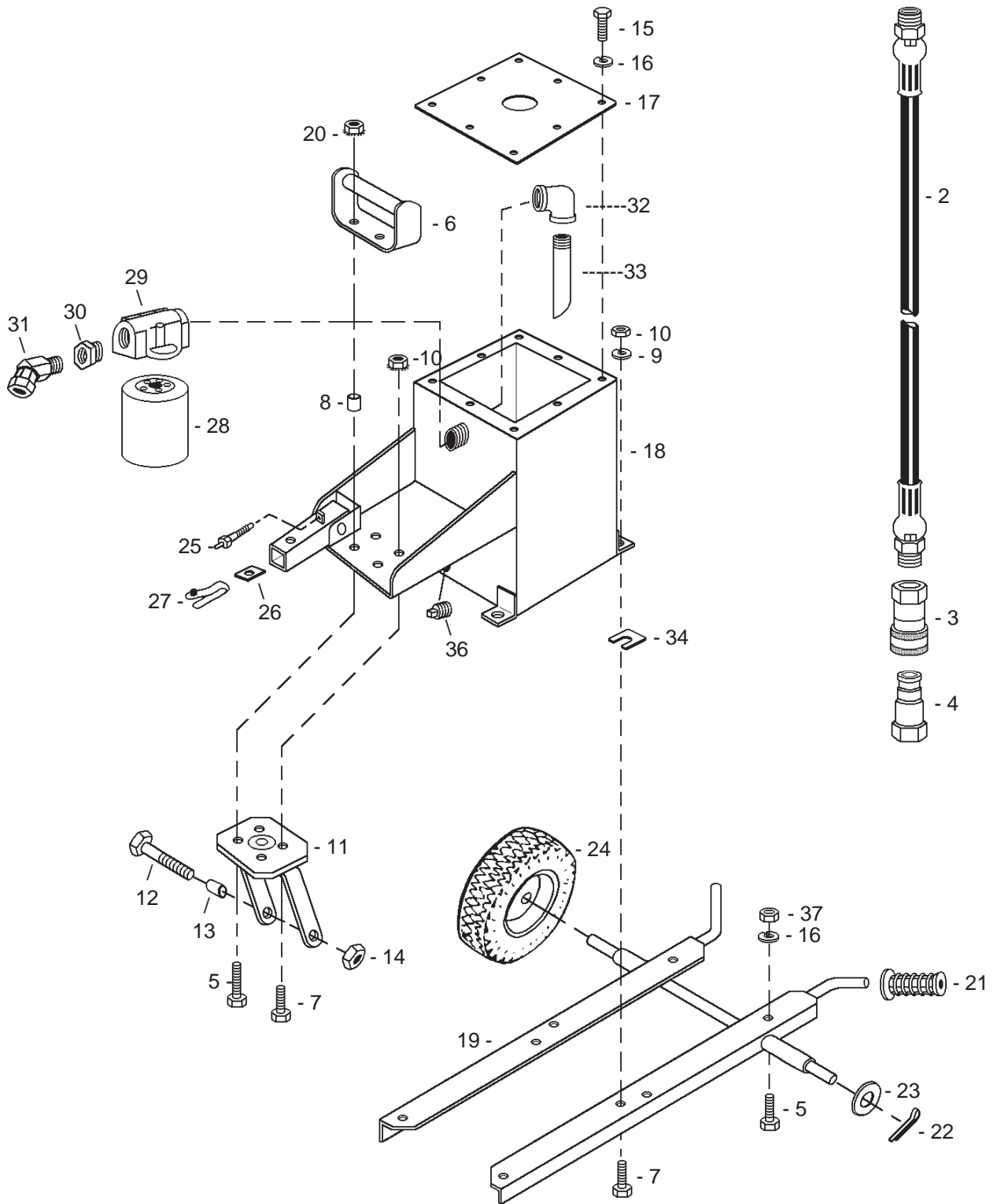


TANK AND CARRIER ASSEMBLY



ITEM	PART #	DESCRIPTION	QTY
------	--------	-------------	-----



WARNING: For power source serial numbers from H-0001 through H-3252, do not exceed the following maximum hose assembly lengths. Longer hose assemblies may allow the torque tube to uncouple, causing serious personal injury.

2	30100	Pressure Hose - 74 1/4" max. overall length	1
2	30111	Return Hose - 68" max. overall length	1
3	30250-H*	Quick Disconnect Coupling, Female	1
4	30251-H*	Quick Disconnect Coupling, Male	1
5	3002-A	Cap Screw, Handle, Caster & Engine Mounting	6
6	30252	Handle, Front	1
7	3012-2	Screw - 3/8" x 1" GR 5	4
8	30198	Spacer, Handle - 5/16" x 5/8"	2
9	3012-3	Lock Washer - 3/8"	6
10	9027-KEP	Nut w/ Lock Washer - 3/8"	6
11	30253-A	Swivel Wheel Mount, Albion	1
12	30155-A	Axle, Swivel - 3/4" x 6" Hex Screw	1
13	30351	Spacer, Swivel Wheel - 3/4" ID x 1 1/8"	2
14	9096	Nut, Axle - 3/4"	1
15	3012-1T	Screw, Tank Top - 5/16"-18 x 3/4" GR 2	8
16	3002-C	Lock Washer - 5/16"	14
17	30254	Tank Top	1
18	30255	Tank	1
19	30256-H	Carrier	1
20	3002-KEP	Nut - 5/16"-18	2
21	30257	Handle Grip	2
22	30163	Cotter - Wheel 1/8" x 1"	2
23	30164	Washer, Wheel - 3/4" Flat	2
24	30348	Wheel, 12" - 3/4" Bore	3
25	3007-9	Kill Switch	1
26	9084-1	Spacer	1
27	9058	Spring & Button	1
28	30280***	Filter	1
29	30281	Filter Base	1
30	30282	Bushing	1
31	30283	Fitting	1
32	30312	Street Ell - 3/4"	1
33	30317	Diffuser, Oil Return Pipe	1
34	30313-11	Shim, 11 Ga - .120"	**
	30313-14	Shim, 14 Ga - .083"	**
	30313-16	Shim, 16 Ga - .065"	**
	30313-18	Shim, 18 Ga. - .049"	**
35	30313-1	Shim Kit - 2 Shims of each size (8 total)	1
36	30159	Magnet Plug	1
37	30318	Nut, Engine Mounting - 5/16"-18 Lock Nut	4

*Power Source with SN#1675 and lower order complete set shown above.

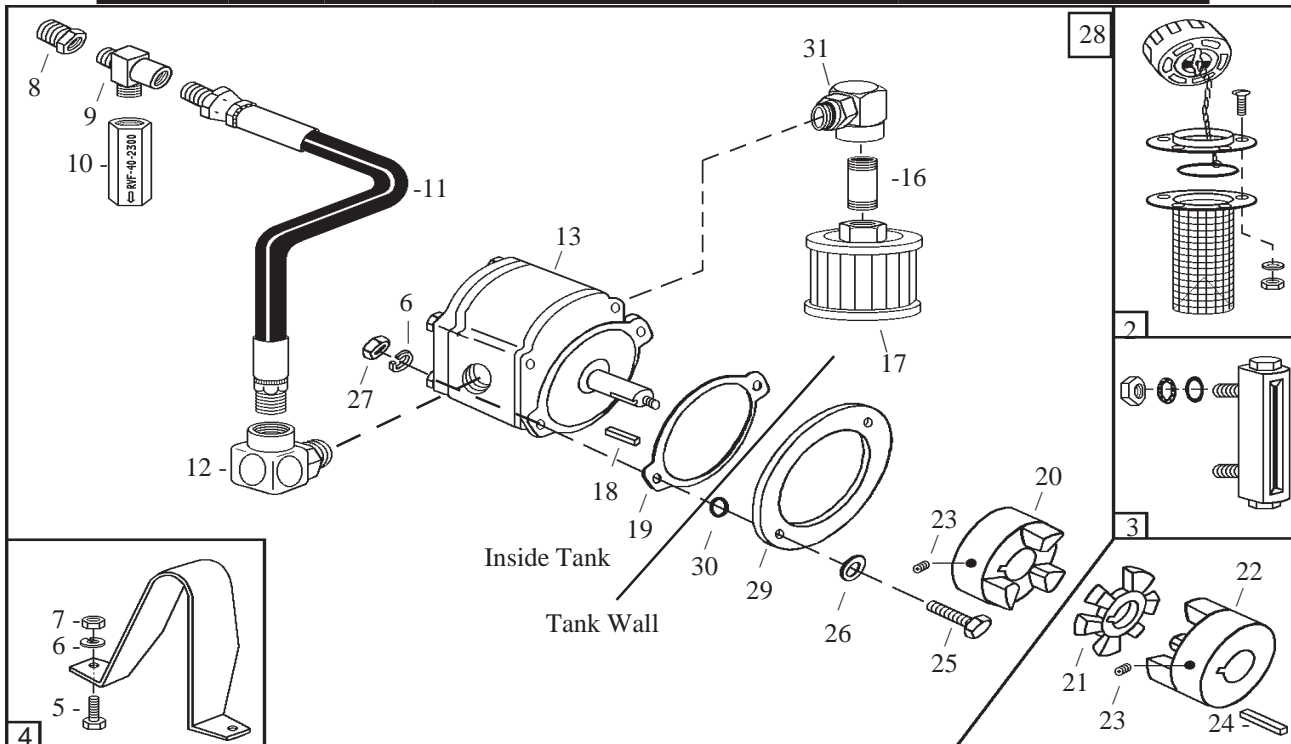
**Quantity and Size may vary.

***Replacement Filter cross reference numbers are as follows:

Zinga #AE10, Ripley #DP75210, Amback #S-28 or Fram #P1653A



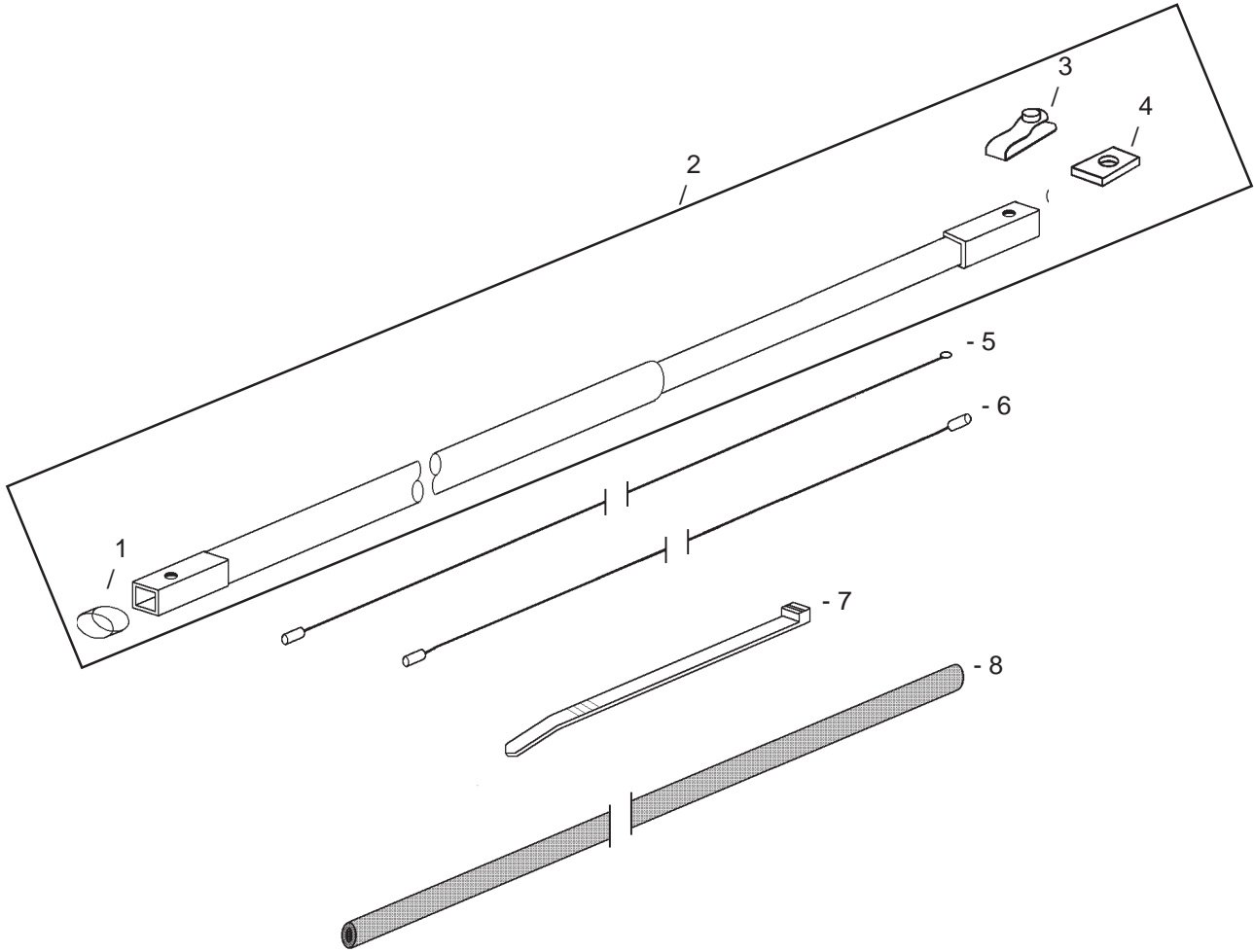
PUMP, FILTER AND SIGHT GAUGE ASSEMBLIES



ITEM	PART #	DESCRIPTION	QTY
2	30260	Cap & Strainer Assembly	1
3	30262	Sight Guage Assembly	1
4	30172	Coupling Guard Assembly	1
5	3012-2	Screw - Guard 3/8" x 1"	2
6	3012-3	Lock Washer - Guard 3/8"	2
7	30154	Nut - Guard 3/8"	2
8	30315	Bushing #5406-8-6	1
9	30316	Fitting #5603-6-6-6	1
10	30270-R	Relief Valve	1
11	30291	Hose - Pump to Tank - 11"	1
12	30286	Fitting #6805-10-NWO	1
13	30263-D2	Dowty Pump with key, SAE-A 2-Bolt Flange	1
16	30310	Nipple 3/4" x 2 1/2"	2
17	30266	Suction Filter	1
18	4019	Key - Pump	1
19	30292-2	Gasket - Dowty Pump - SAE-A Flange (goes inside the tank)	1
20	30267-58	Coupling - Pump End, Dowty - 5/8" Bore	1
21	30269	Spider	1
22	30268	Coupling - Engine End 1" Bore (Honda & B&S)	1
	30268-W	Coupling - Engine End 1 1/8" Bore (Wisconsin)	1
23	30171	Set Screw	2
24	4081	Key - Engine End	1
25	30295	Bolt - 3/8" x 1 1/2" GR 5	2
26	30174	Washer - 3/8" with Neophreme Seal	2
27	30154	Lock Nut - 3/8" Nylon Insert	2
28	30263-D2A	Dowty Pump Assembly (2 bolt mounting)	1
	30314-D	Seal Kit, Dowty Pump	1
29	30293	Ring, Dowty Pump Tank	1
30	30294	O-Ring #110 (goes outside tank)	2
31	30298	Fitting, #6905-12-12-NWO	1



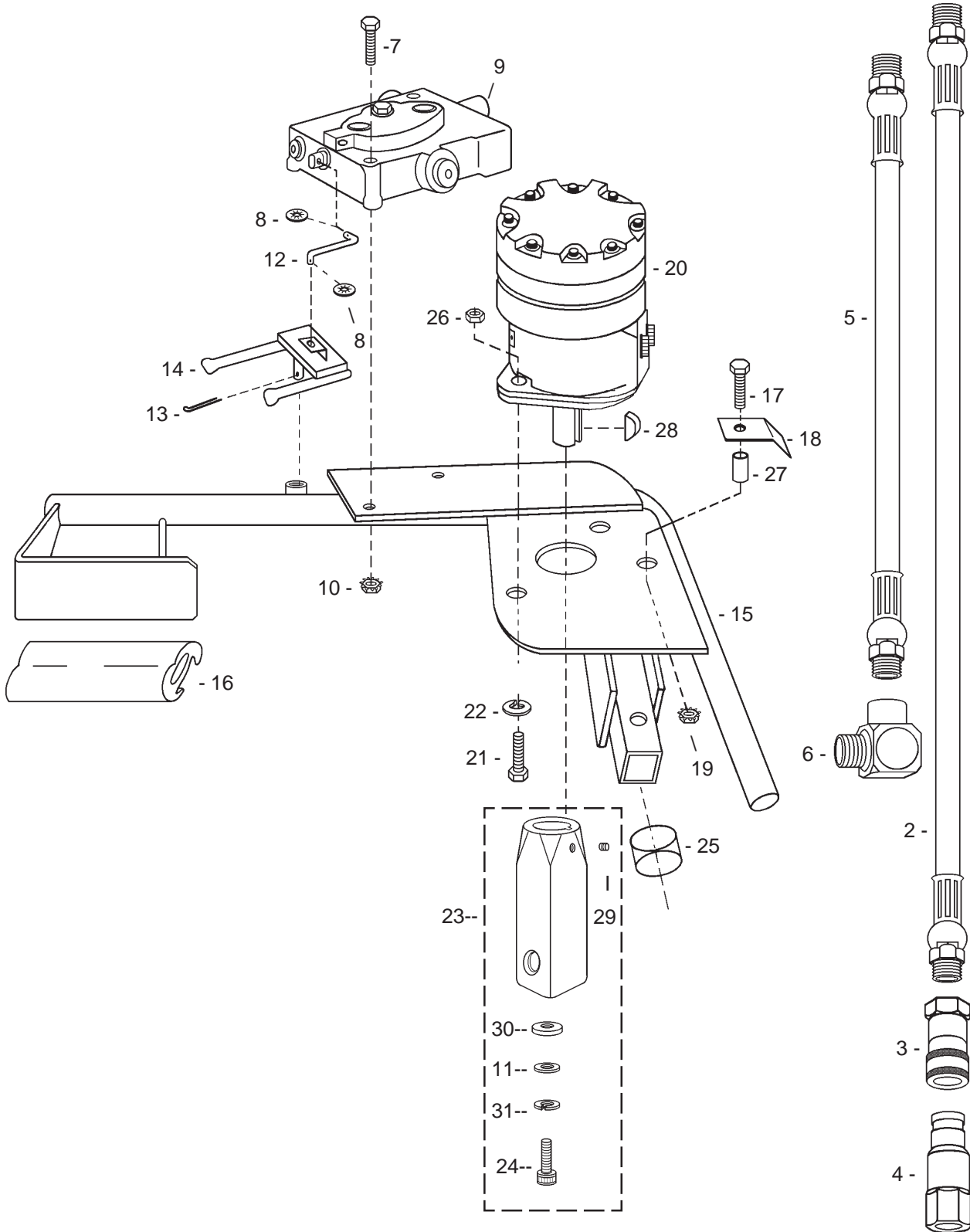
TORQUE TUBE ASSEMBLY




ITEM	PART #	DESCRIPTION	QTY
1	9058-1	Button Shield	1
2	9092-M	One piece Torque Tube	1
3	9058	Spring & Button	1
4	9084-1	Spacer	1
5	30200	Kill Switch Wire (BIC)	1
6	30200-HW	Kill Switch Wire (Honda & Wisconsin)	1
7	3007-5	Plastic Tie	5
8	30201	Wire Loom	1



ONE-MAN HANDLE



ONE-MAN HANDLE

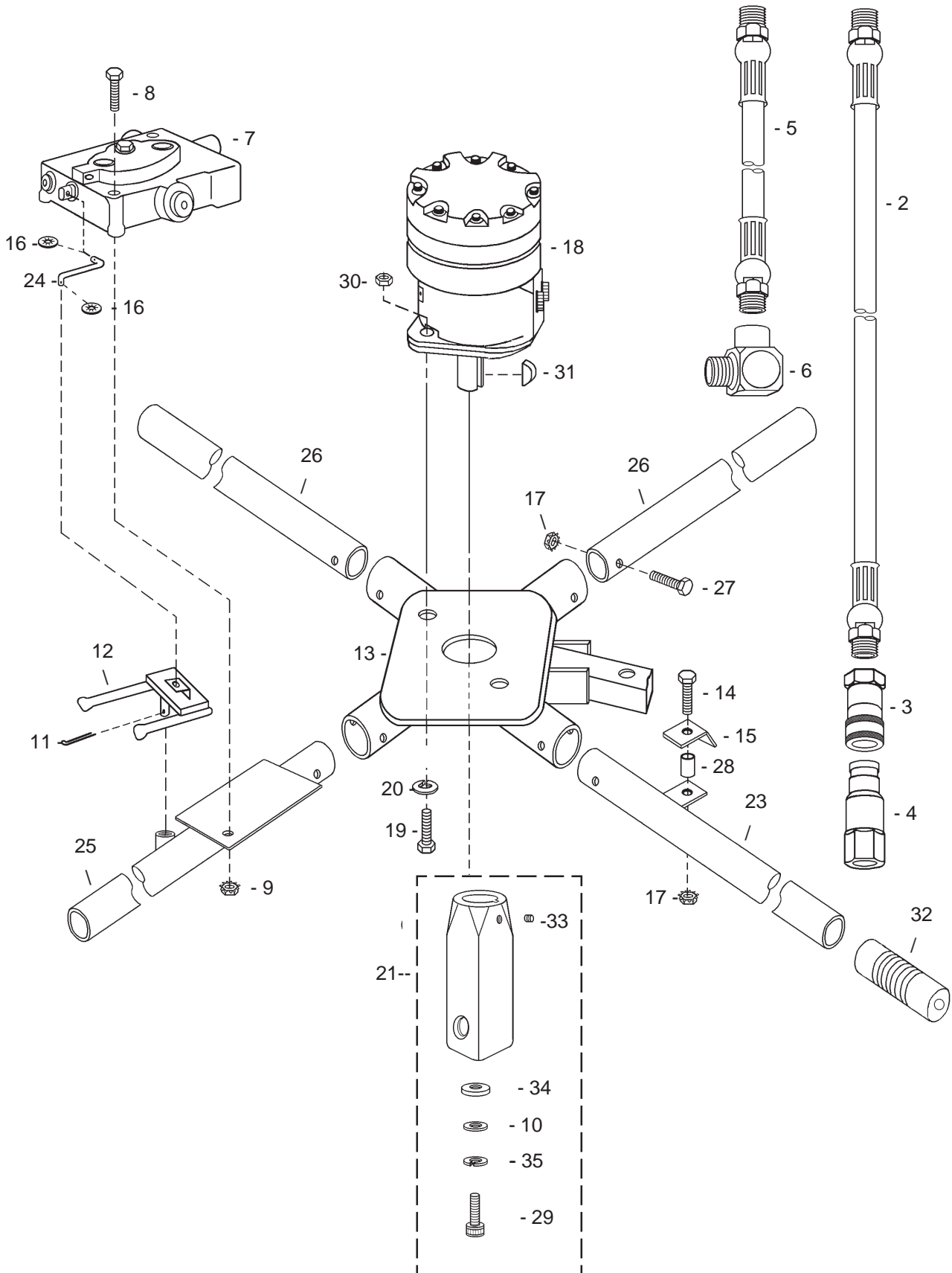
ITEM	PART #	DESCRIPTION	QTY
		WARNING: For power source serial numbers from H-0001 through H-3252, do not exceed the following maximum hose assembly lengths. Longer hose assemblies may allow the torque tube to uncouple, causing serious personal injury.	
2	30102-A	Hose-Valve to Power/Valve to Return, 36" max. overall length	2
3	*30250-H	Disconnect Coupling-Female	1
4	*30251-H	Disconnect Coupling-Male	1
5	30115	Hose-Valve to Motor 15 1/2"	1
	30115-A	Hose-Valve to Motor 19 1/2"	1
		NOTE: SN H-163 & lower order Part #30103	
6	30299	Fitting-Pipe Swivel-Female (O-Ring)	2
	30287	Fitting-NPT	2
7	5076	Cap Screw 1/4" x 2" USS-Valve Mounting	2
8	30188	Pushnut, Locking Washer	2
9	30275	Throttle Valve	1
	30275-2	Seal Kit (Valve)	
10	9026-KEP	Nut 1/4" KEP (Nut w/Lock Washer)	2
11	10304	Washer, 1/4" Standard	1
12	30178-A	Throttle Linkage	1
13	30179	Cotter Key 3/32" x 5/8"	3
14	30180-A	Throttle Lever	1
15	30181-A	One-Man Handle ONLY	1
16	9034	Leg Pad	1
17	3010-9	Screw 5/16" x 2"-Hose Clamp	1
18	30183	Clamp-Hose	1
19	3002-KEP	Nut 5/16" KEP (Nut w/Lock Washer)	1
20	30191	Hydraulic Motor-220 RPM (103-1003)	1
	30191-S2	Hydraulic Motor-150 RPM (103-1004)	1
21	6532	Cap Screw 1/2" x 2" Gr 5 for 2-Bolt Motor	2
22	35312	Lock Washer 1/2"	2
23	30272	Adaptor, Heavy Duty, Hardware Included	1
24	30010	Screw, Socket Head 1/4"-20 x 1" with locking plug	1
25	9058-1	Button Shield	1
26	30158	Nut, Nylon Lock, 1/2"	2
27	30198	Spacer 5/16" x 5/8"-Hose Clamp	1
28	30182	Key	1
29	9021	Set Screw 1/4"-20 x 1/4"-Adaptor	1
30	10520	Washer, Williams, 3/8"	1
31	9025	Washer, Split Lock, 1/4"	1
	30162	Seal Kit (Motor # 103-XXXX-007)	
	30162-A	Seal Kit (Motor #103- 3126 -010 & # 103-XXXX-008)	
	30162-B	Seal Kit (Motor # 103-XXXX-005/006)	
	30162-C	Seal Kit (Motor # 103-XXXX-010, excluding #103- 3126 -010)	

*Power Source with SN#1675 and lower order complete set shown as above.

*Handle SN#5562 and lower order CO-2BF# as replacements.



TWO-MAN HANDLE



TWO-MAN HANDLE



WARNING: For power source serial numbers from H-0001 through H-3252, do not exceed the following maximum hose assembly lengths. Longer hose assemblies may allow the torque tube to uncouple, causing serious personal injury.

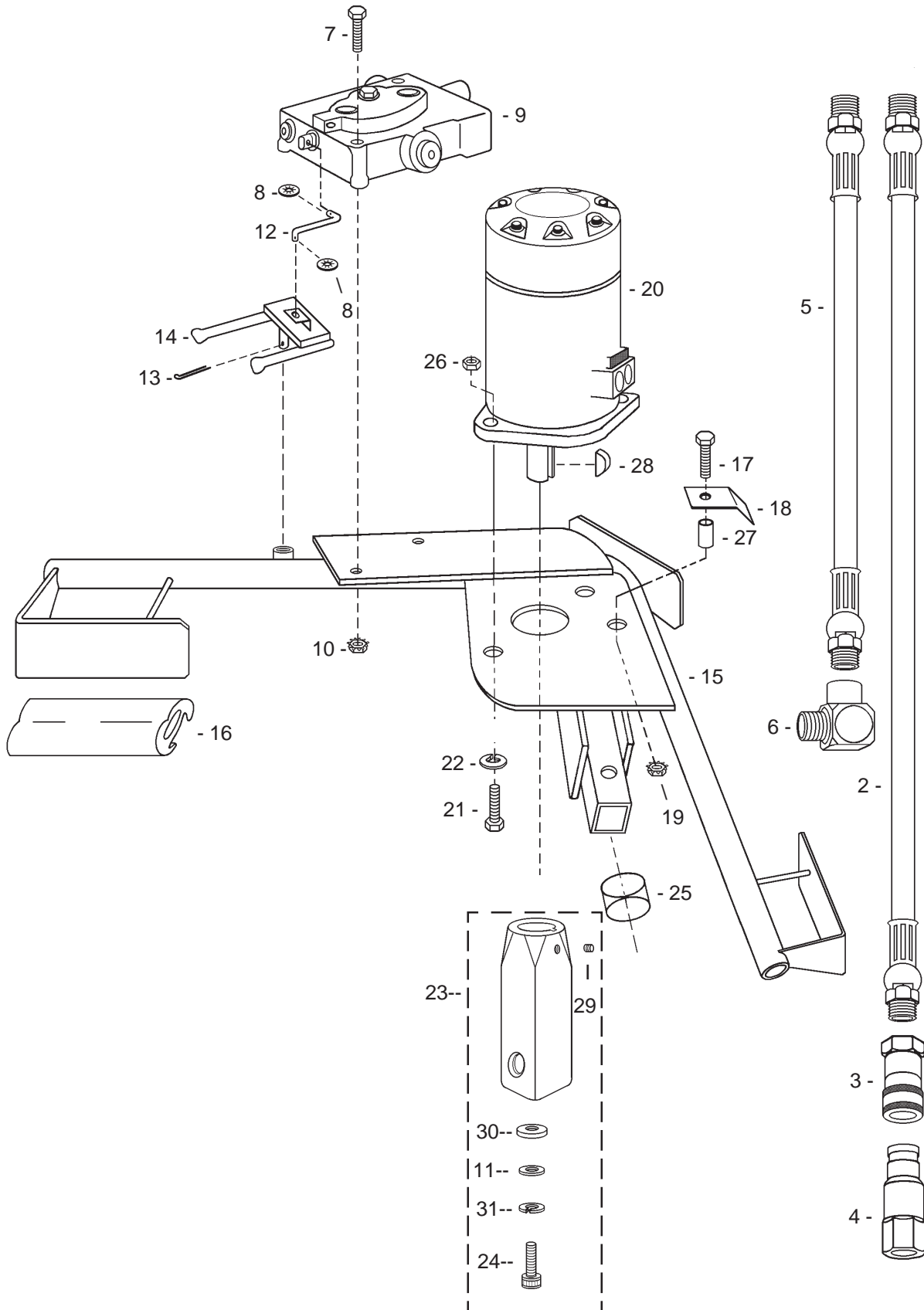
ITEM	PART #	DESCRIPTION	QTY
2	30102-A	Hose-Valve to Power/Valve to Return, 36" max. overall length	2
3	*30250-H	Disconnect Coupling-Female	1
4	*30251-H	Disconnect Coupling-Male	1
5	30115-A2	Hose-Valve to Motor 24"	1
	30115-L	Hose-Valve to Motor 22 1/2"	1
		NOTE: SN H-163 & lower order Part #30105	
6	30299	Fitting-Pipe Swivel-Female (O-Ring)	2
	30287	Fitting, NPT	2
7	30275	Throttle Valve	1
	30275-2	Seal Kit (Valve)	
8	5076	Cap Screw 1/4" x 2" USS GR 5	2
9	9026-KEP	Nut 1/4" KEP (Nut w/ Lock Washer)	2
10	10304	Washer, 1/4", Standard Flat	1
11	30179	Cotter Key 3/32" x 5/8"	1
12	30180-A	Throttle Lever	1
13	30190	Two-Man Handle-Spider	1
14	3002	Bolt 5/16" x 1 1/2" USS GR 2-Hose Bracket	1
15	30183	Clamp-Hose	1
16	30188	Pushnut, Locking Washer	2
17	3002-KEP	Nut 5/16" KEP (Nut w/ Lock Washer)	7
18	30191	Hydraulic Motor-220 RPM (103-1003)	1
	30191-S2	Hydraulic Motor-150 RPM (103-1004)	1
	30278	Hydraulic Motor-60 RPM (101-1008)	1
19	6532	Bolt 1/2" X 2" GR 5-Motor Mounting	2
20	35312	Lock Washer 1/2"	2
21	30272	Adaptor, Heavy Duty, hardware included	1
22	30010	Cap Screw 1/4"-20 x 1" w/Locking Plug	1
23	30271-A	Handle-Hose Anchor 18"	1
24	30178-A	Throttle Linkage	1
25	30273-A	Handle-Throttle Mount 18"	1
26	30274-A	Handle-Bare 18"	2
27	3010-9	Screw 5/16" x 2" USS GR 2-Handle	4
28	30198	Spacer 5/16" x 5/8"-Hose Clamp	1
29	9058-1	Button Shield	2
30	30158	Nut, Nylon Lock, 1/2"	2
31	30182	Key	1
32	30194	Handle Grip-Two-Man Handle	4
33	9021	Set Screw-Adaptor	1
34	10520	Washer, Williams, 3/8"	1
35	9025	Washer, Split Lock, 1/4"	1
	30162	Seal Kit (Motor # 103-XXXX-007)	
	30162-A	Seal Kit (Motor #103- 3126 -010 & # 103-XXXX-008)	
	30162-B	Seal Kit (Motor # 103-XXXX-005/006)	
	30162-C	Seal Kit (Motor # 103-XXXX-010, excluding #103- 3126 -010)	

*Power Source with SN#1675 and lower order complete set shown as above.


*Handle SN# 5562 and lower order CO-2BF# as replacements.



ANCHOR HANDLE



ANCHOR HANDLE

ITEM	PART #	DESCRIPTION	QTY
		WARNING: For power source serial numbers from H-0001 through H-3252, do not exceed the following maximum hose assembly lengths. Longer hose assemblies may allow the torque tube to uncouple, causing serious personal injury.	
			
2	30102-A	Hose-Valve to Power/Valve to Return, 36" max. overall length	2
3	**30250-H	Disconnect Coupling-Female	1
4	**30251-H	Disconnect Coupling-Male	1
5	30115	Hose-Valve to Motor 15 1/2"	1
	30115-A	Hose-Valve to Motor 19 1/2"	1
		NOTE: SN#163 & lower order Part #30103	
6	30299	Fitting-Female (O-Ring)	2
	30287	Fitting, NPT	2
7	5076	Cap Screw 1/4" x 2" USS GR 5-Valve Mounting	2
8	30188	Pushnut, Locking Washer	2
9	30275	Throttle Valve	1
	30275-2	Seal Kit (Valve)	1
10	9026	Nut 1/4" KEP (Nut w/ Lock Washer)	2
11	10304	Washer, 1/4" Standard	1
12	30178-A	Throttle Linkage	1
13	30179	Cotter Key 3/32" x 5/8"	1
14	30180-A	Throttle Lever	1
15	30276-A	Anchor Handle ONLY	1
16	9034	Leg Pad	3
17	3010-9	Set Screw 5/16" x 2" GR 2-Hose Clamp	1
18	30183	Clamp-Hose	1
19	3002-KEP	Nut 5/16" KEP (Nut w/ Lock Washer)	1
20	30278	Hydraulic Motor-60 RPM (101-1008)	1
	30191-S2	Hydraulic Motor-150 RPM (103-1004)	1
	30191	Hydraulic Motor-220 RPM (103-1003)	1
21	6532	Bolt, 1/2" x 2" GR 5-MotorMounting	2
22	35312	Lock Washer 1/2"	2
23	30272	Adaptor, Heavy Duty, includes hardware	1
24	30010	Screw, Socket Head, 1/4"-20 x 1" with locking plug	1
25	9058-1	Button Shield	1
26	30158	Nut, Nylon Lock, 1/2"	2
27	30198	Spacer 5/16" x 5/8"	1
28	30182	Key	1
29	9021	Set Screw-Adaptor	1
30	10520	Washer, Williams, 3/8"	1
31	9025	Washer, Split Lock, 1/4"	1
	*30161	Seal Kit 60023 (Motor # 101-XXXX-007)	
	*30161-A	Seal Kit 60036 (Motor # 101-XXXX-005)	
	30162	Seal Kit (Motor # 103-XXXX-007)	
	30162-A	Seal Kit (Motor #103- 3126 -010 & # 103-XXXX-008)	
	30162-B	Seal Kit (Motor # 103-XXXX-005/006)	
	30162-C	Seal Kit (Motor # 103-XXXX-010, excluding #103- 3126 -010)	

*When ordering Flange or Seal Kit, you must specify motor serial number in order to obtain correct parts.

**Power Source with SN#1675 and lower order complete set as shown above.

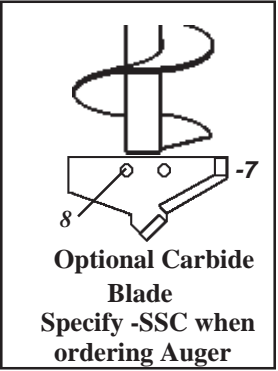
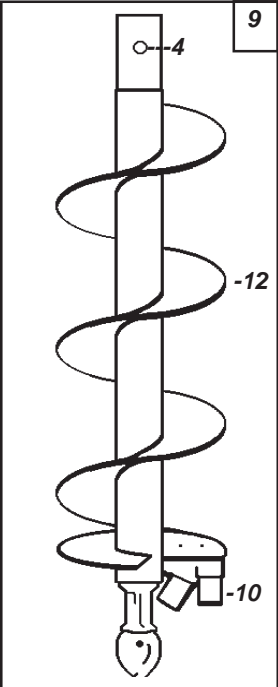
*Handle SN#5562 and lower must order CO-2BF# as replacements



AUGERS & ACCESSORIES

ITEM	PART#	DESCRIPTION
<p>STANDARD AUGER</p>	1	1.5X42-SSS 1-1/2" X 42" Auger, Snap-on with Screw-on Point 2.5X42B 2-1/2" X 42" Bucket Auger, Snap-on 2.5X42SP 2-1/2" x 42" Spiral Barrel Auger (Soil Sampling) 2X36-SSS 2" X 36" Auger, Snap-on with Screw-on Point 2X42-SSS 2" X 42" Auger, Snap-on with Screw-on Point 3X36-SSS 3" X 36" Auger, Snap-on with Screw-on Point 3X42-SSS 3" X 42" Auger, Snap-on with Screw-on Point 4X36-SSS 4" X 36" Auger, Snap-on 4X42-SSS 4" X 42" Auger, Snap-on 5X36-SSS 5" X 36" Auger, Snap-on 5X42-SSS 5" X 42" Auger, Snap-on 6X36-SSS 6" X 36" Auger, Snap-on 6X42-SSS 6" X 42" Auger, Snap-on 7X36-SSS 7" X 36" Auger, Snap-on 7X42-SSS 7" X 42" Auger, Snap-on 8X36-SSS 8" X 36" Auger, Snap-on 8X42-SSS 8" X 42" Auger, Snap-on 9X36-SSS 9" X 36" Auger, Snap-on 9X42-SSS 9" X 42" Auger, Snap-on 10X36-SSS 10" X 36" Auger, Snap-on 10X42-SSS 10" X 42" Auger, Snap-on 12X36-SSS 12" X 36" Auger, Snap-on 12X42-SSS 12" X 42" Auger, Snap-on 14X36-SSS 14" X 36" Auger, Snap-on 14X42-SSS 14" X 42" Auger, Snap-on 16X36-SSS 16" X 36" Auger, Snap-on 16X36-SSSF 16" X 36" Auger, Snap-on, Full Flighted 16X42-SSSF 16" X 42" Auger, Snap-on, Full Flighted
	2	9023-4 Blade for 4" & 5" Augers 9023-6 Blade for 6" & 7" Augers 9023-8 Blade for 8" Augers 9023-9 Blade for 9" & 10" Augers 9023-12 Blade for 12" Augers 9023-14 Blade for 14" Augers 9023-16 Blade for 16" Augers
	3	9027 Point, Standard, Fits 4" thru 12" Augers 9027-16 Point, Standard, Fits 14" and 16" Augers
	4	9058 Spring & Button
	5	9023-S4 Cap Screw & Nut w/Lockwasher, 4" thru 8" Blades 9023-S9 Cap Screw & Nut w/Lockwasher, 9" thru 10" Blades 9023-S12 Cap Screw & Nut w/Lockwasher, 12" Blades 9023-S16 Cap Screw & Nut w/Lockwasher, 14" & 16" Blades
	6	9027-7 Cap Screw & Nut w/Lockwasher, Standard Points

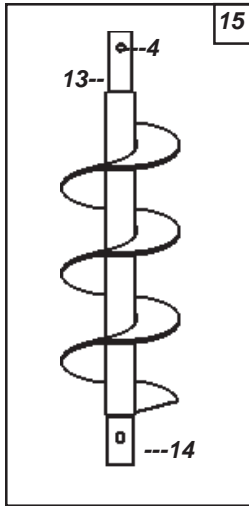


	ITEM	PART#	DESCRIPTION		
STANDARD AUGER WITH CARBIDE POINT  <p>Optional Carbide Blade Specify -SSC when ordering Auger</p>	7	9023-C1.5 9023-C2 9023-C3 9023-C4 9023-C5 9023-C6 9023-C7 9023-C8 9023-C9 9023-C10 9023-C12	Blade, Screw-on, w/Carbide for 1-1/2" Augers Blade, Screw-on, w/Carbide for 2" Augers Blade w/Carbide for 3" Auger, Inc. Mtng. Bolts/Nuts Blade w/Carbide for 4" Auger, " " " Blade w/Carbide for 5" Auger, " " " Blade w/Carbide for 6" Auger, " " " Blade w/Carbide for 7" Auger, " " " Blade w/Carbide for 8" Auger, " " " Blade w/Carbide for 9" Auger, " " " Blade w/Carbide for 10" Auger, " " " Blade w/Carbide for 12" Auger, " " "		
	PENGO AUGER 	8	9027-8S	Cap Screw & Lock Nut for Carbides (2 ea.)	
		9	6X36-SSP 6X42-SSP 7X36-SSP 7X42-SSP 8X36-SSP 8X42-SSP 9X36-SSP 9X42-SSP 10X36-SSP 10X42-SSP 12X36-SSP 12X42-SSP	6" x 36" Snap-on Auger w/Pengo Point & Blade 6" x 42" Snap-on Auger w/Pengo Point & Blade 7" x 36" Snap-on Auger w/Pengo Point & Blade 7" x 42" Snap-on Auger w/Pengo Point & Blade 8" x 36" Snap-on Auger w/Pengo Point & Blade 8" x 42" Snap-on Auger w/Pengo Point & Blade 9" x 36" Snap-on Auger w/Pengo Point & Blade 9" x 42" Snap-on Auger w/Pengo Point & Blade 10" x 36" Snap-on Auger w/Pengo Point & Blade 10" x 42" Snap-on Auger w/Pengo Point & Blade 12" x 36" Snap-on Auger w/Pengo Point & Blade 12" x 42" Snap-on Auger w/Pengo Point & Blade	
		10	9023-P35 9023-P35HS 9023-P1336	Blade, Pengo #35 (1 per 6" & 7" Auger, 2 per 8"-12") Blade, Pengo #35HFF Hardsurfaced (Both sides) Blade, Pengo #1336 w/Carbide	
		11	9027-P 9027-PC	Point, Pengo #SB25 Point, Pengo #SB-25C w/Carbide	
		AUGER REPAIR PARTS <i>Must be welded.</i>	12	FS-3 FS-4 FS-5 FS-6 FS-7 FS-8 FS-9 FS-10 FS-12 FS-14 FS-16	Flighting, replacement 3" x 37" or 60" Section Flighting, 4" x 30" or 37" Section Flighting, 5" x 30" or 37" Section Flighting, 6" x 30" or 37" Section Flighting, 7" x 30" or 37" Section Flighting, 8" x 30" or 37" Section Flighting, 9" x 30" or 37" Section Flighting, 10" x 30" or 37" Section Flighting, 12" x 37" Section Flighting, 14" x 37" Section Flighting, 16" x 16" Section
			13	9062 9062-H	Auger Top for 4" thru 10" Augers Auger Top for 12" thru 16" Augers
			14	9062-1 9062-2	Extension Bottom for 4" thru 10" Extensions Extension Bottom for 12" thru 14" Extensions



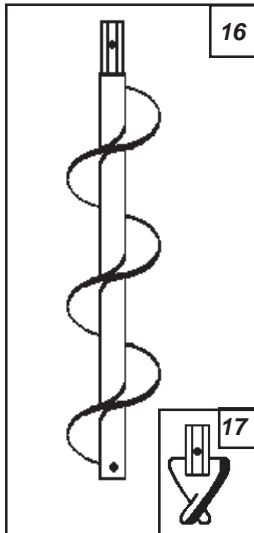
ITEM	PART#	DESCRIPTION
------	-------	-------------

EXTENSION



15	9054	36" Tube Type Snap-on Extension
	9054-A	18" Tube Type Snap-on Extension
	9054-S1.5X36	1-1/2" x 36" Screw-on Ext.(Must use Screw-on Agr)
	9054-S2X36	2" x 36" Screw-on Ext.(Must use Screw-on Auger)
	9054-S3X36	3" x 36" Screw-on Ext.(Must use Screw-on Auger)
	9054-3X36	3" x 36" Snap-on Extension
	9054-4X36	4" x 36" Snap-on Extension
	9054-5X36	5" x 36" Snap-on Extension
	9054-6X36	6" x 36" Snap-on Extension
	9054-7X36	7" x 36" Snap-on Extension
	9054-8X36	8" x 36" Snap-on Extension
	9054-9X36	9" x 36" Snap-on Extension
	9054-10X36	10" x 36" Snap-on Extension
	9054-12X36	12" x 36" Snap-on Extension
	9054-14X36	14" x 36" Snap-on Extension

HEX AUGER/EXTENSION



16	1.5X36-HSL	1-1/2" x 36" Auger/Extension, Hex, Less Point
	1.5X42-HSL	1-1/2" x 42" Auger/Extension, Hex, Less Point
	2X36-HSL	2" x 36" Auger/Extension, Hex, Less Point
	2X42-HSL	2" x 42" Auger/Extension, Hex, Less Point
	3X36-HSL	3" x 36" Auger/Extension, Hex, Less Point
	3X42-HSL	3" x 42" Auger/Extension, Hex, Less Point
17	9027-H1.5	Point, Hex, 1-1/2"
	9027-H2	Point, Hex, 2"
	9027-H3	Point, Hex, 3"
	9041-2	Pin, Locking, 1-1/2" & 2" Hex Auger/Extensions
	9041-3	Pin, Locking, 3" Hex Auger/Extensions

9040 Spring Ball Plunger, (replace as needed)

ADAPTORS
Auger to Transmission

30272	Adaptor, Keyed
30272-HD	Adaptor, Keyed, Heavy Duty
9051-GHAS	Adaptor, Ground Hog to Keyed Adaptor
9061	Adaptor, Screw-on Auger to Keyed Adaptor
9061-H	Adaptor, 1-1/2" & 2" Hex Auger to Keyed Adaptor
9061-H3	Adaptor, 3" Hex Auger to Keyed Adaptor
9061-A	Adaptor, Drill Chuck to Keyed Adaptor



NOTES: